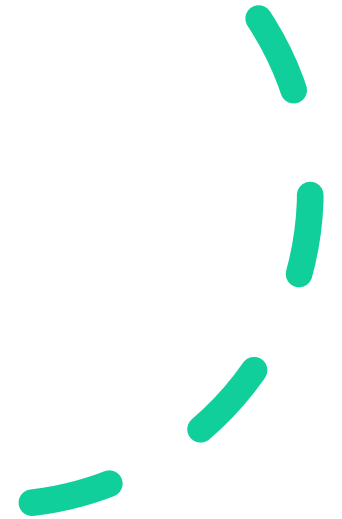
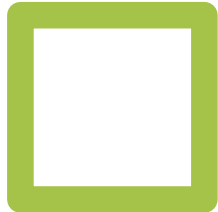
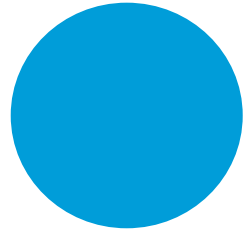




# Croeso I Bae 2



# Croeso

Dear Parents,

We would like to formally welcome you to Bae 2 at Pennard Primary School. This zone of the school consists of Years 1, 2 and 3.

This presentation will give you information with regards to timings, routines and expectations for your child for this year.

Please spend time discussing the information provided today with your child. It is important for both you and your child to know what to expect this year.



Meet the  
staff in  
Bae Dau!



# Support Staff



Miss Morris



Miss Hughes



Mrs Adi

# Support Staff



Miss Thompson



Mrs Burgess



Miss Williams

How we  
learn in  
Bae Dau!



# Learning in Bae Dau

We aim to provide your child with a secure, caring and happy environment in which they will gain skills in all Areas of Learning Experiences (AOLE)

Our teaching is tailored to your child's individual needs. Their needs will already have been identified by a range of baseline assessments

Your child will participate in daily Read, write inc sessions, numeracy and inquiry based learning.

We are passionate about learning through an inquiry based approach where the adults go on a learning journey with the children. We learn through first hand experiences and provide the opportunities for them to explore their world by stimulating their imagination and curiosity both indoors and outdoors.

We try to use as many natural materials and real life resources as possible and provide a neutral classroom environment suitable for all learners.



# Continuous and enhanced provision

We take a holistic approach to children's development, building on their current skills, previous learning and knowledge and experience.

Your child will experience a variety of **continuous provision** such as a role play corner, math's area, writing corner, reading corner, small world, sensory tent, DCF area, construction and outdoor area.

The **enhanced provision** activities will change based upon the children's open inquiries.



# Reading books

- Your child will continue to develop their reading skills through the 'Oxford Reading Tree' scheme and will be also continue exploring the 'Big Cat' reading scheme
- Please enjoy and explore these books which are sent home. Encourage dialogue about the pictures, create story endings, name characters together etc.
- It is important that you comment on your child's reading at home in their reading record book. This will ensure clear communication between parent and teacher on your child's progress and next steps.
- Please ensure that your child has their book in school on their allocated day. This is written on your child's reading record.
- Your child will also have high frequency word flashcards sent home each week to learn. This will be assessed during their reading session and changed when appropriate.
- Please ensure that reading books are returned on their day as there is no time in the timetable to offer an alternative reading day.
- Reading books will only be changed when the previous week's books have been returned.



Our routines  
in  
Bae Dau!





# Our Day

School starts: 8.50 am

Lunchtime: 11.45am

Home time: 3.20 pm

We understand that parents and children will be nervous about starting a new class. This is completely natural. There may be a few tears from your child to begin with but be reassured that our staff are very used to dealing with situations like these. Children will usually settle down quickly and the tears are usually short lived.

We will do everything to make this transition as easy and smooth as possible. We will always phone you if we feel that a child cannot be pacified and if there is something wrong.

Punctuality – please ensure that you are on time for school drop off's and pick up's. This will ensure that your child does not become anxious that they are late for school and likewise that they do not worry that they haven't been collected at the end of the day. Even just a few minutes can feel like a very long time to a young child.

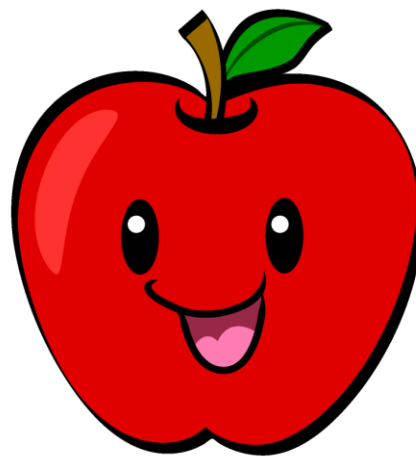
We take the security of our children very seriously. At the end of each session, we will only allow your child to be collected by those that you have authorised to do so.

Please make sure that we are notified of any changes.

# Playtime - snack

---

Children are encouraged to bring a healthy snack to eat during their morning break. This will be during their playtime at 10.20.



©DESIGNALIKIE



# Amser Cinio

Our lunch time is 11.45am - 12.45pm.

Children will all eat their lunch in the hall with their peers.

There is a choice of bringing a healthy packed lunch or having a school cooked lunch. Pupils are supervised at lunchtime – and are helped with food packaging etc.



# School Uniform

We encourage all children to wear school uniform. Consistency in uniform raises the profile of the school in a positive manner. It creates a sense of belonging and unity and presents an image of high standards and expectations. It also portrays the school's ethos and shared positive values.

## •The school uniform consists of:

- White, Pale Blue or Royal Blue Polo Shirt
- Grey or Black trousers / Knee length shorts / skirt (no jeans or short shorts )
- Royal Blue gingham dress
- Royal Blue sweatshirt, hoody or cardigan.
- Black or Grey shoes or Black or Grey trainers
- A school PE T shirt
- Please ensure that your child has weather appropriate clothing – the children access outdoor education daily so it is important that are dressed according to the weather.

Please see links below to purchase our school uniform.

<https://myclothing.com/pennard-primary-school/11963.school>

<https://www.bergoni.co.uk/collections/pennard-primary>



# PE/ Swimming

Our PE session will take place on our Wellbeing Wednesday. During our Wellbeing Wednesday we focus on children's physical, social and emotional development and mental health. Children in Bae 2 will also be having a weekly swimming lesson on Wellbeing Wednesday.

Please ensure your child comes to school dressed in appropriate clothing and footwear on this day in order for them to take part. They will need to be wearing:

- Our school PE T shirt
- Joggers or leggings
- Trainers

Please ensure to pack a swimming kit, goggles, towel and armbands that are blown up (if necessary)



# Homework

## Year 1 –

- Weekly reading which will consist of 1 Oxford Reading Tree book and 1 Big Cat book.
- Weekly flash cards (these will be assessed during their reading time).
- Spelling grid (set 2 sounds)/Numeracy worksheet.

## Year 2 –

- Weekly reading which will consist of 1 Oxford Reading Tree book and 1 Big Cat book.
- Weekly flash cards (these will be assessed during their reading time).
- Spelling grid (Set 3)/Numeracy worksheet.

## Year 3 –

- Weekly reading books.
- Weekly flash cards if applicable (these will be assessed during their reading time).
- Spelling grid (High frequency words)/Numeracy worksheet.

Spelling and Numeracy sheets do not need to be returned.



Parent  
partnerships  
in  
Bae Dau!



# Parent Partnership

We value any information you can share which will help us to build up a detailed picture of your child. Please see us if you have any concerns or need to discuss anything regarding your child. Our door is always open. We are sure that you appreciate that welcoming the children into school in the morning and dismissing them safely to their parents after school is a very busy time. If you would like to speak to us in more detail, then please contact the school office and we can arrange a time to chat.

Follow us on Twitter so that you can see all the wonderful things your children are getting up to in Bae Dau!



Twitter - @Pennardprimary

You can also find useful information on the Bae Dau page of our school website.

<https://www.pennardprimary.co.uk/bae-dau-1/>

**Please remember if you have anything you wish to discuss about your child the best thing is to speak to a member of staff.**

# Can you help us?

There are many valuable ways in which you can 'get involved' and contribute to school life. Here are just a few that you may be interested in:

- Joining Friends of Pennard Primary School, and helping to raise funds to benefit the children in the school.
- Collecting and sending in 'crafty bits' or 'junk modelling' for use by the children in their play
- Loaning us artefacts, story books and information books and anything else linked to our learning.
- Donating spare clothes.
- Volunteer during school trips.

If you can think of any other ways in which you are able to help, then please come and speak to one of the team!



## A final note

We hope that you and your child have a great first term.

Please do not hesitate to come and see us with any queries or concerns, no matter how small.

Diolch!